

Available from :
CRS-Ipswich
Tel : 01473 723515
www.crs-ipswich.co.uk

fidelity totalstock

Back office stock control and reporting software

Fidelity's Stock module is used in conjunction with Total Control and is suitable for both retail and hospitality applications.

effective stock control

Maintaining effective stock control is important in all types and size of business, but it can be critical in the smaller one. Fidelity Total Control with Stock gives hospitality and retail operators the tools and reports to manage this critical and time-consuming area of the business.

basic requirements

No matter what the type of business, effective stock control is built around four facts:

- (1) What you have on hand
- (2) What you have on order
- (3) What you have sold
- (4) What you need to order

Failure to manage any one of these can mean being out of stock or overstocked on an item. To make matters worse, changes in customer demand and preference mean changes in your purchases.

Fidelity Total Control with Stock manages all of this and the result is significant savings in both time and money.

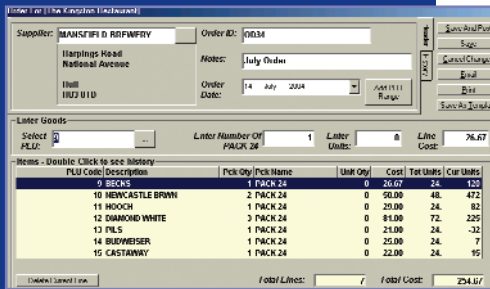
powerful reporting

- | | |
|-------------------------|----------------------|
| Stock Movement | Wastage Summary |
| Stock Valuation | Days Stock Left |
| Delivery Summary | Stock Audit |
| Stock Below Minimum | Supplier Summary |
| Historical Stock Levels | Throughput |
| Stock Consumption | Current Stock Levels |
| Stock On Order | Stock Transfers |
| Stock Potentials | Stock Variance |

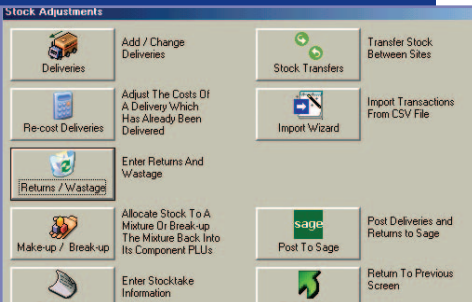
As with Total Control, all reports can be exported into Excel.

peripherals

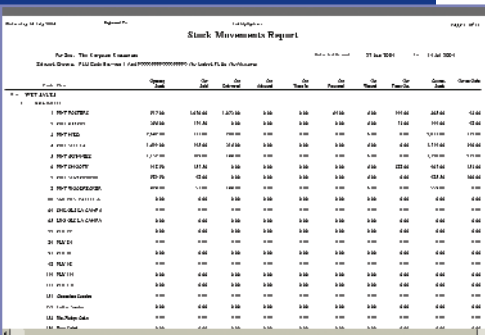
Total Control with Stock comes as standard with modules for shelf edge label printing and connectivity to hand held terminals for deliveries and price checking.



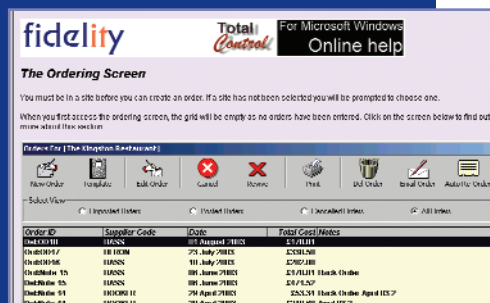
Fully automated stock reordering system



Facilities for deliveries, returns, wastage, transfers and stocktaking



Comprehensive reports with Filter Editor



Comprehensive context sensitive help