



Innovation through experience



# David Pro Software

Management reporting for professional business control



Essential information for increased profitability

## David Pro is a powerful, user-friendly software package designed to provide smaller and medium-sized businesses with the vital information they need for profitable operation.

The latest version of a mature software package, many thousands of which have been reliably serving the hospitality and retailing industries for more than 10 years, David Pro can be single or multi site with an unlimited number of sites. It can operate in-house or remotely via a modem or the Internet.

David Pro collects sales data from your Geller SX Pro range cash register and presents it in easy-to-read reports and/or graphs. With its emphasis on graphical display and built-in Crystal Reports, David Pro is simple to use - and very fast! If you wish, David Pro can email reports to your PC or mobile phone.

### At the point of sale

David Pro enables you to program your Geller cash register to the specific requirements of your business - including Departments, Price Look Ups, Currency Rates, Clerk Names, Receipt Message and Graphic Logo.

### Managing your information for greater efficiency and profit

David Pro has a clever filtering tool that enables you to search easily for information about your products. You can sort products alphabetically, numerically by plu or barcode number, by price, supplier, group or stock quantity.

You can define the search parameters in virtually unlimited combinations to extract specific information. For example, you can specify all beers from all suppliers or all products from a specified supplier. You can narrow the search to such specifics as all products that begin with the letter A from Supplier 1 that cost under £5.

### As changes occur in your business, it is simple to make alterations

Price or VAT changes, for example, can be made to individual items or applied to multiple products by linking them to departments or groups. It is simple to add, say, 10% to products of your choice and round to the nearest value, if that is what you wish to do.

Selecting Backup from the File Menu backs up all your layouts and date stamps them.

Pressing FILTER will select a list of all toiletries that cost more than £1.99.

Plu No	Alpha	Old Price	New Price
2	COKE	2.20	2.40
3	LEMONADE	2.20	2.40
5	MINESTRONE SOUP	4.65	5.10
6	TIGER PRAWNS	5.50	6.00
7	CRAB CAKES	5.50	6.00
9	SPAG+ H/BALLS	9.25	10.10
10	SPAG CARBONARA	8.75	9.60
11	LASAGNE	9.25	10.10
13	CHEESECAKE	4.75	5.20
28	ORANGE JUICE	2.30	2.50
29	APPLE JUICE	2.30	2.50
31	CALANARI	4.95	5.40
32	BAKED MUSHROOMS	4.95	5.40

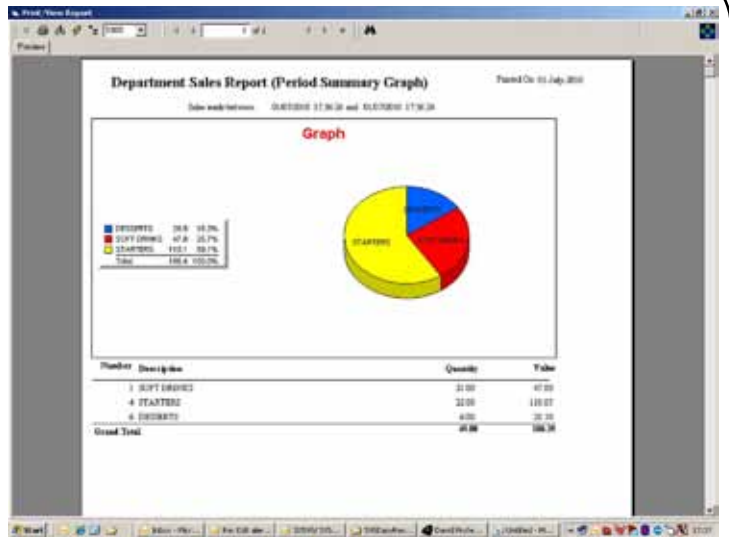
This screen shows selected items and what their selling prices would be if they were raised by 10%. Selecting FINISHED changes the prices in the system.

## Reporting - the way that suits your business

David Pro reads the sales data from all the Geller cash registers in the system and resets them for the next trading period. Reports can be viewed and/or printed. Just a few of David Pro's many reports are Transaction Reports, Reports by Staff Member, Hourly Sales, Department Reports, Top 50 Sellers, Bottom 50 Sellers.

Reports can also be viewed as graphs or pie charts. They can be selected by specified date ranges – for example, 10th May to 17th May for each Geller cash register in the system.

David Pro can consolidate reports from a number of Geller cash registers and/or a number of sites and do it within a date range, if required.



## Simple Stock Control

You can enter stock into David Pro and then send it to the cash register, stock reduces as sales are then made. Once David Pro has read the inventory from the cash register, there are 3 reports which can be viewed and/or printed. These can also be emailed as part of the scheduler.

The screenshot shows a "PLU Inventory" report dated 21 July 2010. It is organized into three sections, one for each supplier. Each section has a table with columns for "Number", "Description", "Standard", "Current", "Low Stock", and "Order Qty".

Supplier 1 BOOKER					
Number	Description	Standard	Current	Low Stock	Order Qty
1	MARS	10	20		<input type="text"/>
2	TWIX	10	15		<input type="text"/>

Supplier 2 COSTCO					
Number	Description	Standard	Current	Low Stock	Order Qty
3	COKE	10	5	***	<input type="text"/>
4	FANTA	10	4	***	<input type="text"/>

Supplier 3 3663					
Number	Description	Standard	Current	Low Stock	Order Qty
5	SURE	10	30		<input type="text"/>
6	COLGATE	10	45		<input type="text"/>

Report A - PLU Inventory This shows all products with their stock values. Any items that are low on stock are indicated with \*\*\*\*\*.

Report B - PLU Inventory (Low Stock) This shows all products that are low on stock and require re-ordering. If suppliers are setup the supplier name will be shown above each re-order section. There are also boxes for convenience allowing you to manually write in the required re-order quantity.

Report C - PLU Inventory (Zero Skip) This will show all products that have stock allocated to them. Where Report A shows every PLU, this report only shows the products which have stock associated to them.

## Barcode Labels

David Pro prints barcode labels for unlabelled products. When a price is changed, David Pro automatically tags it and prints the new label on request.

If you use in-house bar codes, all you need do is enter all your products without bar codes either straight into David Pro or import them from Excel. Just one click and David Pro generates in-house bar codes and can then print bar code labels.



## Help is always just a button press away

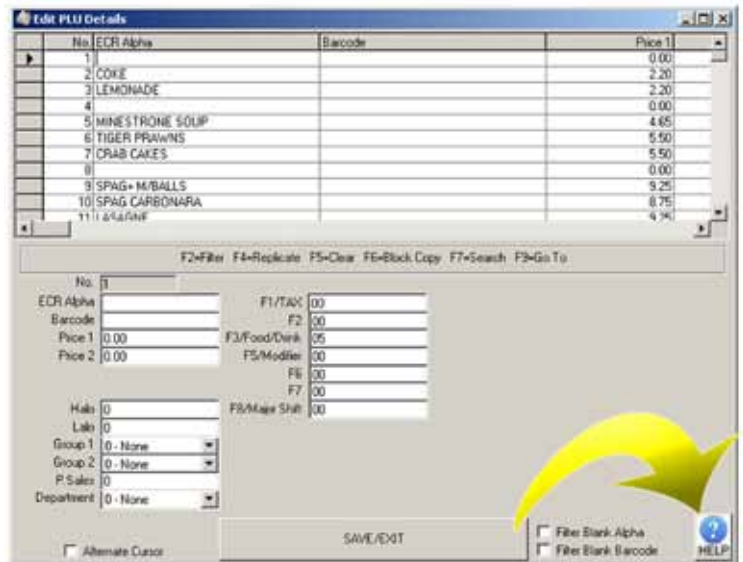
At the press of a button, the David Pro Help Manual is there to assist you. Context-sensitive help means that whatever you are doing, the Help Icon in the bottom right-hand corner of every screen will take you straight to the appropriate section. For example, if you are changing products (plus) and have a query, pressing the Help Icon takes you straight to the Edit plus Section without you having to look through an index.

## On line supervision in real time

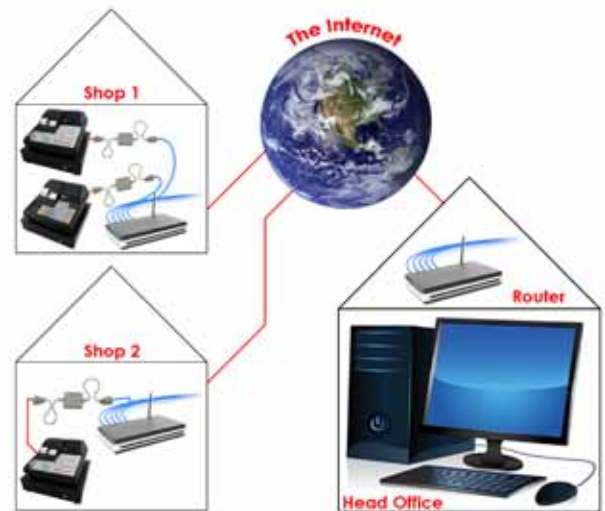
David Pro allows you to view the information you choose from selected cash registers/shops in the system in real time on your PC or your mobile phone. For example, you could choose to look at the Cash in Drawer figure, say, every hour and set an alert to notify you when the cash in drawer exceeds £1,000. You could look at Void and/or Discount transactions done by staff as well as set alerts to notify you when they happen.

## If you prefer your reports via email.....

Just enter your email address - David Pro does the rest! When the Geller cash registers are polled, the sales reports are automatically sent to your email address. If required, David Pro can be set to send automated pre-programmed email alerts - say, for voids, discounts or paid out transactions over a certain amount. It can also send end-of day reports to the owner's mobile phone when he is absent from the business.



There is a context sensitive Help icon at the bottom right of each screen



## Importing your products into David Pro is child's play

Just enter your product information in any order onto an Excel spreadsheet. At the click of a mouse, David Pro will import the information and put it under the headings you have chosen.

## A professional tool for professional businesses

David Pro Software is a professional tool that gathers all the information you need to help you run your business professionally while saving you stress, time and cost.

David Pro links to the SX-585, SX595 & SX-695 models. David Pro is designed to run on a PC running Windows XP and requires a RS232 COM port for connection to the cash register.

## About CRS-Ipswich

CRS is a family run business that has been supplying cash registers & EPOS systems for over 35 years to businesses throughout Suffolk, North East Essex & South Norfolk.

For over 30 years we have been a Geller dealer.



[www.crs-ipswich.co.uk](http://www.crs-ipswich.co.uk)

**Showroom :**  
94 Rushmere Road,  
Ipswich, IP4 4JY.

**Tel : 01473 723515**

**Fax : 01473 405631**

**sales@crs-ipswich.co.uk**

The information given in this leaflet is subject to change without notice and does not represent a commitment on the part of CRS-Ipswich